

Free Pattern

skill level: Experienced
Shown in size Small

sizes

Directions are for women's size Small.
Changes for sizes Medium, Large, 1X and 2X are in parentheses.

To Fit Bust Size: 30(34-38-42-46)"

finished measurements

Bust – 33¾(37½-41¼-45-48¾)"

Hip – 38¼(42½-46¾-51-55¼)"

Length – 24¾(24¾-26¾-26¾-26¾)"

Note: This garment was designed with approximately 3-4" of ease. Please take this into consideration when selecting your size.

materials

4(5-6-7-7) Hanks **BERROCO ULTRA ALPACA FINE** (100 grs), #1279 Potting Soil Mix
Crochet hook, size 3.75 mm (F/5) OR SIZE TO OBTAIN GAUGE

Tapestry needle

Spray bottle and straight pins for blocking.

gauge

32 sts (2 st repeats) = 4"; 14 rows (1 Row repeat)= 4.5" in Row 2 of arch cables stitch pattern.

Notes

Tunic is worked in the round from the bottom to the top of the body, and then divided in 2 for front and back panels. Sleeves are seamed in separately. Shaping on the bottom of the tunic and sleeves are created by adding or subtracting one chain space between each arch for a smooth transition. Stitch pattern is not altered other than this additional (or not) chain space.

*Berroco Ultra®
Alpaca Fine*



**Find this yarn
at your LYS**

Our supercharged store locator goes above and beyond the ordinary. Innovatively linked to our inventory system, search for a yarn in your area and you'll pinpoint LYS's that have a proven history of ordering that product. A handy listing of all of the Berroco yarns the store carries and easy access to driving directions are also right at your finger tips. *Find all yarns now.*

NOTE: We recommend using yarns called for in our instructions. Every effort has been made to ensure that directions contained in this book are accurate and complete, however errors do occur. We cannot be responsible for variance of individual knitters, human or typographical errors.

All pattern PDFs are updated when corrections are made. In the event of finding an error, please make sure you've downloaded the most recent version.

ARCH CABLES STITCH PATTERN

See stitch diagram on page 9 for assistance.

Chain a multiple of 14 plus 3.

Row 1 (WS): Dc2tog in 4th and 5th ch from hook, *sk 1 ch, dc in next 3 ch, (dc, ch 2, dc, ch 2, dc) in next ch, dc in next 3 ch, sk 1 ch, dc5tog in next 5 ch; rep from * across to last 12 ch, sk 1 ch, dc in next 3 ch, (dc, ch 2, dc, ch 2, dc) in next ch, dc in next 3 ch, sk 1 ch, dc3tog in last 3 ch, turn.

Row 2: Ch 5, sk dc3tog, *FPtr around next 2 dc, dc in next 2 dc, ch 3, sc in next dc, ch 3, dc in next 2 dc, FPtr around next 2 dc,** ch 1, sk dc5tog; rep from * across to tch ending at **, dtr in top of tch, turn.

Row 3: Ch 5, *BPdc around next 2 tr, dc in next 2 dc, ch 3, sc in sc, ch 3, dc in next 2 dc, BPdc around next 2 tr,** ch 2, sk ch-1 sp; rep from * across ending at **, ch 1, tr in top of tch, turn.

Row 4: Ch 5, *FPtr around next 2 dc, dc in next 2 dc, ch 3, sc in next sc, ch 3, dc in next 2 dc, FPtr around next 2 dc,** ch 3, sk ch-2 sp; rep from * across ending at **, ch 1, tr in 4th ch of tch, turn.

Row 5: Ch 6, *BPdc around next 2 dc, dc in next 2 dc, ch 2, dc in sc, ch 2, dc in next 2 dc, BP around next 2 dc,** ch 4, sk ch-3 sp; rep from * across ending at **, ch 2, tr in 4th ch of tch, turn.

Row 6: Ch 6, *FPtr around next 2 dc, dc2tog over next 2 dc, ch 1, dc in next dc, ch 1, dc2tog over next 2 dc, FPtr around next 2 dc,** ch 5, sk ch-4 sp; rep from * across ending at **, ch 2, tr in 4th ch of tch, turn.

Row 7: Ch 7, sk ch-2 sp, *BPdc around next tr, rt dc dec over next tr and dc2tog, dc in dc, lf dc dec over dc2tog and tr, BPdc around next tr,** ch 6, sk ch-5 sp; rep from * across ending at **, ch 3, tr in 4th ch of tch, turn.

Row 8: Ch 5, dc in tr, 3 dc in ch-3 sp, *tr arch pt over

next 5 dc, (4 dc, ch 2, dc, ch 2, 4 dc) in ch-6 sp; rep from * across to last 5 dc, tr arch pt over next 5 dc, (4 dc, ch 2, dc) in tch-sp, turn.

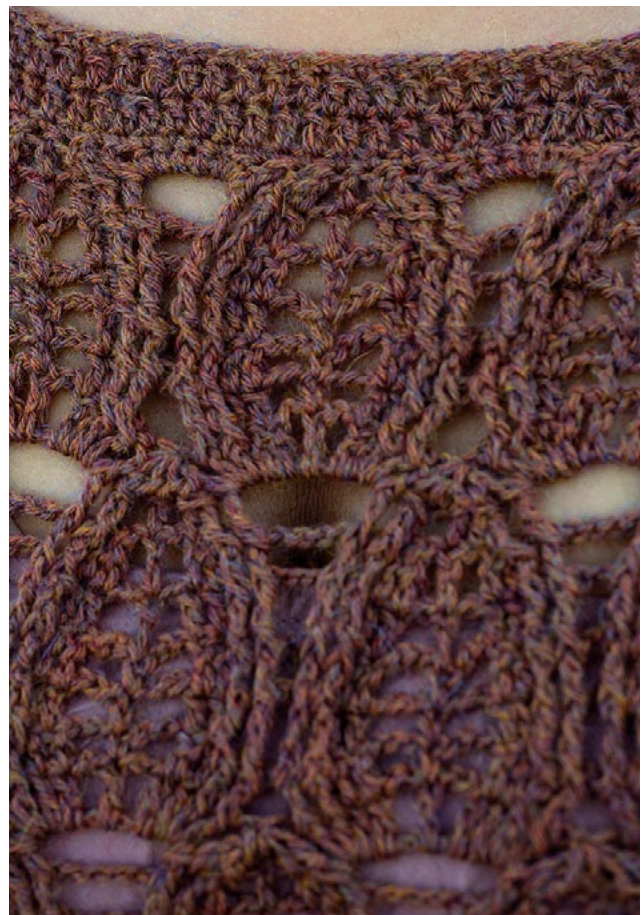
Row 9: Ch 1, *sc in dc, ch 3, dc in next 2 dc, BPdc over next 2 dc, ch 1, sk arch pt, BPdc over next 2 dc, dc in next 2 dc, ch 3; rep from * across, sc in 3rd ch of tch, turn.

Row 10: Ch 1, *sc in sc, ch 3, dc in next 2 dc, FPtr around next 2 dc, ch 2, sk ch-1 sp, FPtr around next 2 dc, dc in next 2 dc, ch 3; rep from * across, sc in last sc, turn.

Row 11: Ch 1, *sc in sc, ch 3, dc in next 2 dc, BPdc around next 2 dc, ch 3, sk ch-2 sp, BPdc around next 2 dc, dc in next 2 dc, ch 3; rep from * across, sc in last sc, turn.

Row 12: Ch 5, *dc in next 2 dc, FPtr around next 2 dc, ch 4, sk ch -3 sp, FPtr around next 2 dc, dc in next 2 dc, ch 2, dc in sc**, ch 2; rep from * across ending at **, turn.

Row 13: Ch 4, *dc2tog over next 2 dc, BPdc around next 2 dc, ch 5, BPdc around next 2 dc, dc2tog over



next 2 dc, ch 1, dc in next dc**, ch 1; rep from * across ending at ** in 3rd ch of tch, turn.

Row 14: Ch 3,*rt tr dec over dc2tog and dc, FPtr around next dc, ch 6, sk ch-5 sp, FPtr around next dc, lf tr dec over next dc and dc2tog, dc in dc; rep from * across ending in 3rd ch of tch, turn.

Row 15: Ch 2, BPdc2tog over next 2 tr, *(4 dc, ch 2, dc, ch 2, 4 dc) in ch-6 sp, dc arch pt over next 5 sts; rep from * across to last ch-sp, (4 dc, ch 2, dc, ch 2, 4 dc) in last ch-6 sp, BPdc3tog over last 2 dc and tch, turn. Rep Rows 2-15 to desired length.

PATTERN BODY

See Body stitch diagram on page 10 for assistance.
Fsc 252 (280, 308, 336, 364), sl st to first fsc, turn.

Row 1(WS): Ch 3 (counts as dc), dc in next 2 sc, (dc, ch 2, dc, ch 2, dc) in next sc, dc in next 3 sc, *sk 1 sc, dc5tog over next 5 sc, sk 1 sc, dc in next 3 sc, (dc, ch 2, dc, ch 2, dc) in next sc, dc in next 3 sc; rep from * across to last 7 sc, sk 1 sc, dc5tog over next 5 sc, sk last sc, sl st in top of tch, turn. (162, 180, 198, 216, 234 dc + 18, 20, 22, 24, 26 dc5tog (18, 20, 22, 24, 26 SR))

Row 2: Ch 5, cont in Row 2 of arch cables stitch pattern w ch 2 bet groups of FPtr around, sl st to 3rd ch of tch, turn.

Row 3: Ch 2, cont in Row 3 of arch cables stitch pattern w ch 3 bet groups of BPdc around, sl st to top of tch, turn.

Row 4: Ch 7, cont in Row 4 of arch cables stitch pattern w ch 4 bet groups of FPtr around, sl st to 3rd ch of tch, turn.

Row 5: Ch 2, cont in Row 5 of arch cables stitch pattern w ch 5 bet groups of BPdc around, sl st to top of tch, turn.

Row 6: Ch 9, cont in Row 6 of arch cables stitch pattern w ch 6 bet groups of FPtr around, sl st to 3rd ch of tch, turn.

Row 7: Ch 2, cont in Row 7 of arch cables stitch pattern w ch 7 bet groups of BPdc around to last ch-sp, ch 3, tr in top of tch, turn.

Row 8: Ch 5, 4 dc in ch-3 sp, cont in Row 8 of arch cables stitch pattern across to last 5 dc, tr arch pt over next 5 dc, 4 dc around post of tr, ch 2, sl st to 3rd ch of tch, turn.

Row 9: Ch 1, sc in same ch, cont in Row 9 of arch cables stitch pattern w ch 2 bet groups of BPdc around to first sc, sl st to first sc, turn.

Row 10: Cont in Row 10 of arch cables stitch pattern w ch 3 bet groups of FPtr around to first sc, sl st to first sc, turn.

Row 11: Cont in Row 11 of arch cables stitch pattern w ch 4 bet groups of BPdc around to first sc, sl st to first sc, turn.

Row 12: Cont in Row 12 of arch cables stitch pattern w ch 5 bet groups of FPtr around to tch, ch 2, sl st to 3rd ch of tch, turn.

Row 13: Cont in Row 13 of arch cables stitch pattern w ch 6 bet groups of BPdc around to tch, ch 1, sl st to 3rd ch of tch, turn.

Row 14: Cont in Row 14 of arch cables stitch pattern w ch 7 bet groups of FPtr around to tch, sl st to top of tch, turn.

Row 15: Sl st to next 2 tr, sl st in ch-sp, ch 3 (counts as dc), (3 dc, ch 2, dc, ch 2, 4 dc) in ch-sp, cont in Row 15 of arch cables stitch pattern around to tch, sl st to top of tch, turn.

Row 16: Ch 4, cont in Row 2 of arch cables stitch pattern, sl st to 3rd ch of tch, turn.

Row 17: Ch 2, cont in Row 3 of arch cables stitch pattern, sl st to top of tch, turn.

Row 18: Ch 6, cont in Row 4 of arch cables stitch pattern, sl st to 3rd ch of tch, turn.

Row 19: Ch 2, cont in Row 5 of arch cables stitch pattern, sl st to top of tch, turn.

Row 20: Ch 8, cont in Row 6 of arch cables stitch pattern, sl st to 3rd ch of tch, turn.

Row 21: Ch 2, cont in Row 7 of arch cables stitch pattern around to last ch-sp, ch 3, dc in top of tch, turn.

Row 22: Ch 5, 4 dc in ch-3 sp, cont in Row 8 of arch cables stitch pattern across to last 5 dc, tr arch pt over next 5 dc, 4 dc around post of dc, ch 2, sl st to 3rd ch of tch, turn.

Row 23: Ch 1, sc in same ch, cont in Row 9 of arch cables stitch pattern around to first sc, sl st to first sc, turn.

Row 24: Cont in Row 10 of arch cables stitch pattern around to first sc, sl st to first sc, turn.

Row 25: Cont in Row 11 of arch cables stitch pattern around to first sc, sl st to first sc, turn.

Row 26: Cont in Row 12 of arch cables stitch pattern around to tch, ch 2, sl st to 3rd ch of tch, turn.

Row 27: Cont in Row 13 of arch cables stitch pattern around to tch, ch 1, sl st to 3rd ch of tch, turn.

Row 28: Cont in Row 14 of arch cables stitch pattern around to tch, sl st to top of tch, turn.

Row 29: Sl st to next 2 tr, sl st in ch-sp, ch 3 (counts as dc), (3 dc, ch 2, dc, ch 2, 4 dc) in ch-sp, cont in Row 15 of arch cables stitch pattern around to tch, sl st to top of tch, turn.

Rows 30-36: Rep Rows 16-22

Row 37: Ch 1, sc in same ch, cont in Row 9 of arch cables stitch pattern w no ch bet groups of BPdc around to first sc, sl st to first sc, turn.

Row 38: Cont in Row 10 of arch cables stitch pattern w ch 1 bet groups of FPtr around to first sc, sl st to first sc, turn.

Row 39: Cont in Row 11 of arch cables stitch pattern w ch 2 bet groups of BPdc around to first sc, sl st to first sc, turn.

Row 40: Cont in Row 12 of arch cables stitch pattern w ch 3 bet groups of FPtr around to tch, ch 2, sl st to 3rd ch of tch, turn.

Row 41: Cont in Row 13 of arch cables stitch pattern w ch 4 bet groups of BPdc around to tch, ch 1, sl st to 3rd ch of tch, turn.

Row 42: Cont in Row 14 of arch cables stitch pattern w ch 5 bet groups of FPtr around to tch, sl st to top of tch, turn.

Row 43: Sl st to next 2 tr, sl st in ch-sp, ch 3 (counts as dc), (3 dc, ch 2, dc, ch 2, 4 dc) in ch-sp, cont in Row 15 of arch cables stitch pattern around to tch, sl st to top of tch, turn.

Row 44: Ch 3, cont in Row 2 of arch cables stitch pattern w no ch bet groups of FPtr around, sl st to 3rd ch of tch, turn.

Row 45: Ch 2, cont in Row 3 of arch cables stitch pattern w ch 1 bet groups of BPdc around, sl st to top of tch, turn.

Row 46: Ch 5, cont in Row 4 of arch cables stitch pattern w ch 2 bet groups of FPtr around, sl st to 3rd ch of tch, turn.

Row 47: Ch 2, cont in Row 5 of arch cables stitch pattern w ch 3 bet groups of BPdc around, sl st to top of tch, turn.

Row 48: Ch 7, cont in Row 6 of arch cables stitch pattern w ch 4 bet groups of FPtr around, sl st to 3rd ch of tch, turn.

ARMHOLE SHAPING

See Armhole shaping diagram on page 10 for assistance.

Row 1a: Ch 2, cont in Row 7 of arch cables stitch pattern w ch 5 bet groups of BPdc for 8 (8, 9, 9, 9) ch-5 sps ending at **, turn.

Row 2a: Ch 3, cont in Row 8 of arch cables stitch pattern across ending with tr arch point, turn.

Row 3a: Ch 5, cont in Row 9 of arch cables stitch pattern across w no ch-sp bet BPdc groups, dtr in top of tr arch point, turn. (8, 8, 9, 9, 9 SR)

Row 4a: Ch 4, cont in Row 10 of arch cables stitch pattern across w ch 1 bet FPtr groups to tch, tr in top of tch, turn.

Row 5a: Ch 5, cont in Row 11 of arch cables stitch pattern across w ch 2 bet BPdc groups to tch, ch 1, tr in top of tch, turn.

Row 6a: Ch 5, cont in Row 12 of arch cables stitch pattern across w ch 3 bet FPtr groups to tch, ch 1, tr in 4th ch of tch, turn.

Row 7a: Ch 6, cont in Row 13 of arch cables stitch pattern across w ch 4 bet BPdc groups to tch, ch 2, tr in 4th ch of tch, turn.

Row 8a: Ch 6, cont in Row 14 of arch cables stitch pattern across w ch 5 bet FPtr groups to tch, ch 2, tr in 4th ch of tch, turn.

Row 9a: Ch 5, dc in tr, 3 dc in ch-2 sp, cont in Row 15 of arch cables stitch pattern across to tch, (4 dc, ch 2, dc) in tch-sp, turn.

Row 10a: Ch 1, sc in dc, cont in Row 2 of arch cables stitch pattern across w no ch-sp bet FPtr groups to tch, sc in 3rd ch of tch, turn.

Row 11a: Ch 1, sc in sc, cont in Row 3 of arch cables stitch pattern across w ch 1 bet BPdc groups to last sc, sc in last sc, turn.

Row 12a: Ch 1, sc in sc, cont in Row 4 of arch cables stitch pattern across w ch 2 bet FPtr groups to last sc, sc in last sc, turn.

Row 13a: Ch 5, cont in Row 5 of arch cables stitch pattern across w ch 3 bet BPdc groups across to last sc, dc in last sc, turn.

Row 14a: Ch 4, dc2tog over next 2 dc, FPtr around next 2 dc, cont in Row 6 of arch cables stitch pattern across w ch 4 bet FPtr groups to tch, ch 1, dc in 3rd ch of tch, turn.

For Sizes L/XL/2X ONLY: Row 15a: Ch 3, cont in Row 7 of arch cables stitch pattern across w ch 5 bet BPdc groups to tch, dc in 3rd ch of tch, turn.

Row 16a: Ch 2, FPdc2tog over next 2 sts, cont in Row 8 of arch cables stitch pattern across to last 3 sts, FPdc3tog over last 3 sts, turn.

Rows 17a-21a: Rep Rows 3a-7a

COLLAR SHAPING

See Collar Shaping diagrams on page 11 for assistance.

For Sizes S/ M ONLY: Row 15a: Ch 3, If dc dec over dc2tog and tr, BPdc around next tr, *ch 5, sk ch-4 sp, BPdc around next tr, rt dc dec over next tr and dc2tog, dc in dc, If dc dec over dc2tog and tr, BPdc around next tr*; rep from * once more, **(hdc, 4 sc, hdc) in next ch-4 sp, BPdc around next tr, rt dc dec over next tr and dc2tog, dc in dc, If dc dec over dc2tog and tr, BPdc around next tr; rep from ** 3 more times; rep from * to * once, ch 5, sk ch-4 sp, BPdc around next tr, rt dc dec over next tr and dc2tog, dc in dc, turn.

Row 16a: Ch 2, FPtr2tog over next 2 st, *(4 dc, ch 2, dc, ch 2, 4 dc) in ch-5 sp, tr arch pt over next 5 dc; rep from * once more, dtr in next hdc, turn.

Row 17a: Ch 4, *BPdc over next 2 dc, dc in next 2 dc, ch 3, sc in dc, ch 3, dc in next 2 dc, BPdc over next 2 dc, sk arch pt; rep from * once more, dtr in tr2tog, turn.

Row 18a: Ch 4, *FPtr around next 2 dc, dc in next 2 dc, ch 3, sc in sc, ch 3, dc in next 2 dc, FPtr around next 2 dc, ch 1; rep from * once more, tr in top of tch, turn.

Row 19a: Ch 4, *BPdc around next 2 dc, dc in next 2 dc, ch 3, sc in sc, ch 3, dc in next 2 dc, BPdc around next 2 dc**, ch 2, sk ch-1 sp; rep from * to tch ending at **, ch 1, tr in top of tch, turn.

Row 20a: Ch 5, *FPtr around next 2 dc, dc in next 2 dc, ch 2, dc in sc, ch 2, dc in next 2 dc, FPtr around next 2 dc**, ch 3, sk ch-2 sp; rep from * across ending at **, dc in top of tch, turn.

Row 21a: Ch 3, BPdc around next dc, dc2tog over next 2 dc, ch 1, dc in next dc, ch 1, dc2tog over next 2 dc, BPdc around next 2 dc, ch 4, sk ch-3 sp, BPdc around next 2 dc, dc2tog over next 2 dc, ch 1, dc in next dc, ch 1, dc2tog over next 2 dc, BPdc around next 2 dc, ch 2, tr in 4th ch of tch, turn.

Row 22a: Ch 1, (3 sc, hdc) in ch-2 sp, FPdc around next dc, rt tr dec over next dc and dc2tog, dc in dc, If tr dec over dc2tog and dc, FPdc around next dc, (hdc, 5 sc, hdc) in ch-4 sp, FPdc around next dc, rt tr dec over next dc and dc2tog, dc in dc, If tr dec over dc2tog and dc, dc in last dc, fasten off.

Row 16b: Join yarn with sl st to last hdc on Row 15a, ch 4, *tr arch pt over next 5 dc, (4 dc, ch 2, dc, ch 2, 4 dc) in ch-5 sp; rep from * once more, FPtr3tog over last 3 sts, turn.

Row 17b: Ch 5, *BPdc over next 2 dc, dc in next 2 dc, ch 3, sc in dc, ch 3, dc in next 2 dc, BPdc over next 2 dc, sk arch pt; rep from * once more, tr in top of tch, turn.

Row 18b: Ch 5, *FPtr around next 2 dc, dc in next 2 dc, ch 3, sc in sc, ch 3, dc in next 2 dc, FPtr around next 2 dc**, ch 1; rep from * once more ending at **, tr in top of tch, turn.

Row 19b: Ch 5, *BPdc around next 2 dc, dc in next 2 dc, ch 3, sc in sc, ch 3, dc in next 2 dc, BPdc around next 2 dc**, ch 2, sk ch-1 sp; rep from * to tch ending at **, tr in top of tch, turn.

Row 20b: Ch 3, *FPtr around next 2 dc, dc in next 2 dc, ch 2, dc in sc, ch 2, dc in next 2 dc, FPtr around next 2 dc**, ch 3, sk ch-2 sp; rep from * across ending at **, ch 1, tr in 4th ch of tch, turn.

Row 21b: Ch 6, BPdc around next 2 dc, dc2tog over next 2 dc, ch 1, dc in next dc, ch 1, dc2tog over next 2 dc, BPdc around next 2 dc, ch 4, sk ch-3 sp, BPdc around next 2 dc, dc2tog over next 2 dc, ch 1, dc in next dc, ch 1, dc2tog over next 2 dc, BPdc around next dc, dc in next tr, turn.

Row 22b: Ch 3, If tr dec over next dc and dc2tog, dc in dc, rt tr dec over dc2tog and dc, FPdc around next dc, (hdc, 5 sc, hdc) in ch-4 sp, FPdc around next dc, If tr dec over next dc and dc2tog, dc in dc, rt tr dec over dc2tog and dc, FPdc in last dc, (hdc, 3 sc) in tch-sp, fasten off.

For Sizes L/XL/2X ONLY: Row 22a: Ch 6, *FPtr around next dc, If tr dec over next dc and dc2tog, dc in dc, rt tr dec over dc2tog and dc, FPtr around next dc, ch 5, sk ch-4 sp; rep from * once more, ** FPtr around next dc, If tr dec over next dc and dc2tog, dc in dc, rt tr dec over dc2tog and dc, FPtr around next dc, (hdc, 5 sc, hdc) in ch-4 sp; rep from ** 3 more times, rep from * across to tch, ch 2, tr in 4th ch of tch, turn.

Row 23a: Ch 5, dc in tr, 3dc in ch-2 sp, dc arch pt over next 5 sts, (4 dc, ch 2, dc, ch 2, 4 dc) in ch-5 sp, dc arch pt over next 5 sts, (4 dc, ch 2, dc, ch 1, 4 dc) in ch-5 sp, dc arch pt over next 5 sts, fasten off, turn.

Row 24a: Join yarn w sl st in ch-1 sp, ch 1, *sc in next dc, ch 3, dc in next 2 dc, FPtr around next 2 dc, FPtr around next 2 dc, dc in next 2 dc, ch 3; rep from * across to tch, sc in 3rd ch of tch, turn.

Row 25a: Ch 1, *sc in sc, ch 3, dc in next 2 dc, BPdc around next 2 tr, ch 1, BPdc around next 2 tr, dc in next 2 dc, ch 3; rep from * across to last sc, sc in last sc, turn.

Row 26a: Sl st in first sc, *ch 3, dc in next 2 dc, FPtr around next 2 dc, ch 2, sk ch-1 sp, FPtr around next 2 dc, dc in next 2 dc, ch 3, sc in next sc; rep from * across, turn.

Row 27a: Ch 5, dc in next 2 dc, BPdc around next 2 dc, ch 3, sk ch-2 sp, BPdc around next 2 dc, dc in next 2 dc, ch 2, dc in sc, ch 2, dc in next 2 dc, BPdc around next 2 dc, ch 3, sk ch-2 sp, BPdc around next 2 dc, dc in next 2 dc, dc in ch-3 sp, turn.

Row 28a: Ch 2, sk 2 dc, hdc in next dc, FPtr around next 2 dc, ch 4, sk ch-3 sp, FPtr around next 2 dc, dc2tog over next 2 dc, ch 1, dc in next dc, ch 1, dc2tog over next 2 dc, FPtr around next 2 dc, ch 4, sk ch-3 sp, FPtr around next 2 dc, dc2tog over next 2 dc, ch 1, dc in 3rd ch of tch, turn.

Row 29a: Ch 3, If dc dec over dc2tog and tr, BPdc around next tr, (hdc, 4 sc, hdc) in ch-4 sp, BPdc around next tr, rt dc dec over next tr and dc2tog, dc in dc, If dc dec over next dc2tog and tr, BPdc around next tr, (hdc, 4 sc, hdc) in ch-4 sp, sc in next tr, sl st in next tr, fasten off.

Row 23b: Join yarn to first hdc in Row 22a, ch 2, dc arch pt over next 5 sts, (4 dc, ch 1, dc, ch 2, 4 dc) in ch-5 sp, dc arch pt over next 5 sts, (4 dc, ch 2, dc, ch 2, 4 dc) in ch-5 sp, dc arch pt over next 5 sts, (4 dc,

ch 2, dc) in tch-sp, turn.

Row 24b: Ch 1, *sc in next dc, ch 3, dc in next 2 dc, FPtr around next 2 dc, FPtr around next 2 dc, dc in next 2 dc, ch 3; rep from * across to dc before last ch-1 sp, sc in next dc, sc in next ch-1 sp, turn.

Row 25b: Ch 1, sk first sc, *sc in next sc, ch 3, dc in next 2 dc, BPdc around next 2 tr, ch 1, BPdc around next 2 tr, dc in next 2 dc, ch 3; rep from * across to last sc, sc in last sc, turn.

Row 26b: Ch 1, *sc in next sc, ch 3, dc in next 2 dc, FPtr around next 2 dc, ch 2, sk ch-1 sp, FPtr around next 2 dc, dc in next 2 dc, ch 3; rep from * across, sl st in last sc, turn.

Row 27b: Ch 3, dc in next 2 dc, BPdc around next 2 dc, ch 3, sk ch-2 sp, BPdc around next 2 dc, dc in next 2 dc, ch 2, dc in sc, ch 2, dc in next 2 dc, BPdc around next 2 dc, ch 3, sk ch-2 sp, BPdc around next 2 dc, dc in next 2 dc, ch 2, dc in last sc, turn.

Row 28b: Ch 4, dc2tog over next 2 dc, FPtr around next 2 dc, ch 4, sk ch-3 sp, FPtr around next 2 dc, dc2tog over next 2 dc, ch 1, dc in next dc, ch 1, dc2tog over next 2 dc, FPtr around next 2 dc, ch 4, sk ch-3 sp, FPtr around next 2 dc, hdc in next dc, sk next dc, hdc in top of tch, turn.

Row 29b: Sl st in next hdc, sl st in next tr, sc in next tr, (hdc, 4 sc, hdc) in ch-4 sp, BPdc around next tr, If dc dec over next tr and dc2tog, dc in dc, rt dc dec over dc2tog and tr, BPdc around next tr, (hdc, 4 sc, hdc) in ch-4 sp, BPdc around next tr, If dc dec over next tr and dc2tog, dc in 3rd ch of tch, fasten off.

SLEEVE (Make 2)

Ch 87 (101-115-129-129)

Row 1(WS): Dc2tog in 4th and 5th ch from hook, *sk 1 ch, dc in next 3 ch, (dc, ch 2, dc, ch 2, dc) in next ch, dc in next 3 ch, sk 1 ch, dc5tog in next 5 ch; rep from * across to last 12 ch, sk 1 ch, dc in next 3 ch, (dc, ch 2, dc, ch 2, dc) in next ch, dc in next 3 ch, sk 1 ch, dc3tog in last 5 ch, turn. (54, 63, 72, 81, 81 dc + 5, 6, 7, 8, 8 dc5tog (6-7-8-9-9 SR))

Row 2: Cont in Row 2 of arch cables stitch pattern w no ch bet groups of FPtr across, turn.

Row 3: Cont in Row 3 of arch cables stitch pattern w ch 1 bet groups of BPdc across, turn.

Row 4: Cont in Row 4 of arch cables stitch pattern

w ch 2 bet groups of FPtr across, turn.

Row 5: Cont in Row 5 of arch cables stitch pattern w ch 3 bet groups of BPdc across, turn.

Row 6: Cont in Row 6 of arch cables stitch pattern w ch 4 bet groups of FPtr across, turn.

Row 7: Cont in Row 7 of arch cables stitch pattern w ch 5 bet groups of BPdc across, turn.

Row 8: Cont in Row 8 of arch cables stitch pattern across, turn.

Row 9: Cont in Row 9 of arch cables stitch pattern w no ch bet groups of BPdc across, turn.

Row 10: Cont in Row 10 of arch cables stitch pattern w ch 1 bet groups of FPtr across, turn.

Row 11: Cont in Row 11 of arch cables stitch pattern w ch 2 bet groups of BPdc across, turn.

Row 12: Cont in Row 12 of arch cables stitch pattern w ch 3 bet groups of FPtr across, turn.

Row 13: Cont in Row 13 of arch cables stitch pattern w ch 4 bet groups of BPdc across, turn.

Row 14: Cont in Row 14 of arch cables stitch pattern w ch 5 bet groups of FPtr across, turn.

Row 15: Cont in Row 15 of arch cables stitch pattern around to tch, sl st to top of tch, turn.

Rows 16-29: Rep Rows 2-15 of arch cables stitch pattern

Rows 30-34: Rep Rows 2-6 of arch cables stitch pattern

CAP SHAPING

See Cap Shaping diagram on page 12 for assistance.

Row 1: Ch 1, (3 sc, hdc) in ch-2 sp, cont in Row 7 of arch cables stitch pattern across to tch, (hdc, 3 sc) in tch-sp, turn.

Row 2: Sl st in next 4 sts, ch 3, tr arch pt over next 5 sts, cont in Row 8 of arch cables stitch pattern across to last 4 sts, leave last 4 sts unworked, turn.

Row 3: Ch 5, sk tr arch pt, BPdc2tog over next 2 dc, dc in next 2 dc, ch 3, sc in next dc, cont in Row 9 of arch cables stitch pattern across to last 2 dc, If cap dec over last 2 dc and tr arch pt, turn.

Row 4: Ch 3, dc2tog over next 2 dc, ch 3, sc in next sc, cont in Row 10 of arch cables stitch pattern across to last 3 sts, rt cap dec over last 3 sts, turn.

Row 5: Ch 5, sc in next sc, cont in Row 11 of arch

cables stitch pattern across to last ch-3 sp, ch 2, dc in dc2tog, turn.

Row 6: Ch 2, dc in next sc, ch 2, cont in Row 12 of arch cables stitch pattern across to last sc, dc2tog over last sc and 3rd ch of tch, turn.

Row 7: Ch 4, dc2tog over next 2 dc, BPdc around next 2 tr, cont in Row 13 of arch cables stitch pattern across to last dc, tr in last dc, turn.

Row 8: Ch 1, sc in dc2tog, sc in next dc, hdc in next dc, ch 6, cont in Row 14 of arch cables stitch pattern across to last ch-sp, ch 6, hdc in next dc, sc in next dc, sc in next dc2tog, turn.

Row 9: Sl st in next 3 sts, sl st in next ch-6 sp, (2 sc, hdc, dc, ch 2, 4 dc) in same ch-6 sp, cont in Row 15 of arch cables stitch pattern across to last ch-sp, (4 dc, ch 2, dc, hdc, 2 sc, sl st) in last ch-6 sp, turn.

Row 10: Sk sl st, sl st in next 3 sts, sc in next dc, ch 3, cont in Row 2 of arch cables stitch pattern across to last dc, sc in last dc, sl st in next hdc, turn.

Row 11: Sk sl st, sl st in next sc, sl st in next ch-3 sp, ch 2, dc in next 2 dc, cont in Row 3 of arch cables stitch pattern across to last ch-3 sp, hdc in last ch-3 sp, turn.

Row 12: Ch 1, hdc in next dc, dc in next dc, cont in Row 4 of arch cables stitch pattern across to last dc, hdc2tog over last dc and tch, turn.

Row 13: Ch 2, hdc2tog over next dc and tr, BPdc around next tr, cont in Row 5 of arch cables stitch pattern across to last 2 tr, BPdc around next tr, hdc2tog over next tr and dc, turn.

Row 14: Sl st in hdc2tog, ch 7, FPtr around next 2 dc, cont in Row 6 of arch cables stitch pattern across to last ch-4 sp, ch 3, tr in next dc, turn.

For Sizes S/M ONLY: Row 15 (last row): Ch 1, (3 sc, hdc) in ch-3 sp, *BPdc around next dc, rt dc dec over next 2 sts, dc in next dc, If dc dec over next 2 sts, BPdc around next dc, (hdc, 5 sc, hdc) in next ch-5 sp; rep from * 0 (1) more times, BPdc around next dc, rt dc dec over next 2 sts, dc in next dc, If dc dec over next 2 sts, BPdc around next dc, (hdc, 3 sc) in tch-sp, fasten off.

For Sizes L/XL/2X ONLY: Row 15: Ch 6, sk ch-sp, BPdc around next tr, cont in Row 7 of arch cables stitch pattern across to tch, ch 2, tr in 4th ch of tch, turn.

Row 16: Ch 3, sk ch-sp, tr arch pt over next 5 sts, cont in Row 8 of arch cables stitch pattern across to tch, dc in tch-sp, turn.

Row 17: Ch 4, sk tr arch pt, cont in Row 9 of arch cables stitch pattern across to tch, ch 1, dc in top of tch, turn.

Row 18: Ch 4, sk ch-1 sp, cont in Row 10 of arch cables stitch pattern across to tch, ch 1, dc in tch-sp, turn.

Row 19: Ch 3, sk ch-1 sp, cont in Row 11 of arch cables stitch pattern across to tch, dc in tch-sp, turn.

For Sizes L/ XL ONLY: Row 20: Ch 2, sk first dc, *FPtr around next 2 dc, dc in next 2 dc, ch 2, dc in next sc, ch 2, dc in next 2 dc, FPtr around next 2 dc**, 3 dc in ch-3 sp; rep from * across ending at **, fasten off.

For Size 2X ONLY: Row 20: Ch 2, sk first dc, FPtr around next 2 dc, cont in Row 12 of arch cables stitch pattern across, turn.

Row 21: Ch 2, BPdc around next 2 tr, cont in Row 13 of arch cables stitch pattern across, turn.

Row 22: Ch 2, FPtr around next dc, cont in Row 14 of arch cables stitch pattern across, turn.

Row 23: Ch 2, dc arch pt over next 5 sts, cont in Row 15 of arch cables stitch pattern across, turn.

Row 24: Ch 4, *FPtr around next 2 dc, dc in next 2 dc, ch 2, sc in dc, ch 2, dc in next 2 dc, FPtr around next 2 dc**, ch 1; rep from * across ending at **, tr in top of dc arch pt, fasten off.

FINISHING

BLOCKING AND SEAMING

Pin body and sleeves to schematic size. Spray with water and allow to dry.

Turn body inside out with WS facing. Sl st across shoulder seams, turn RS out.

Pin sleeves to armholes with RS facing, whipstitch in place. Whipstitch down underarm seam.

COLLAR EDGING

Join yarn to WS back edge with sl st, place stitch markers at inside corners of neckline.

Rnd 1 (WS): Ch 1, sc evenly around edge, sl st to first sc, turn.

Rnds 2-3: Ch 3, *dc in ea st around to 1 st before m, dc3tog over next 3 sts; rep from * around, dc in ea st to tch, sl st to top of tch, turn.

Rnd 4: Ch 1, sc in ea dc around, sl st to first sc, fasten off.

CUFF EDGING

Join yarn to WS underarm edge with sl st

Rnd 1 (WS): Ch 1, sc evenly around edge, sl st to first sc, turn.

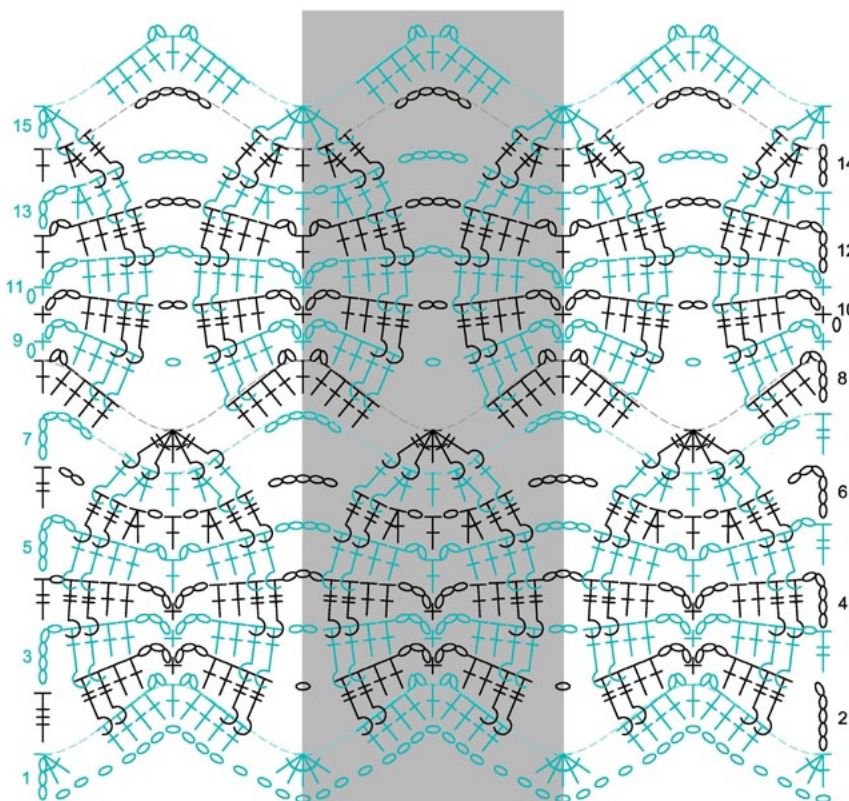
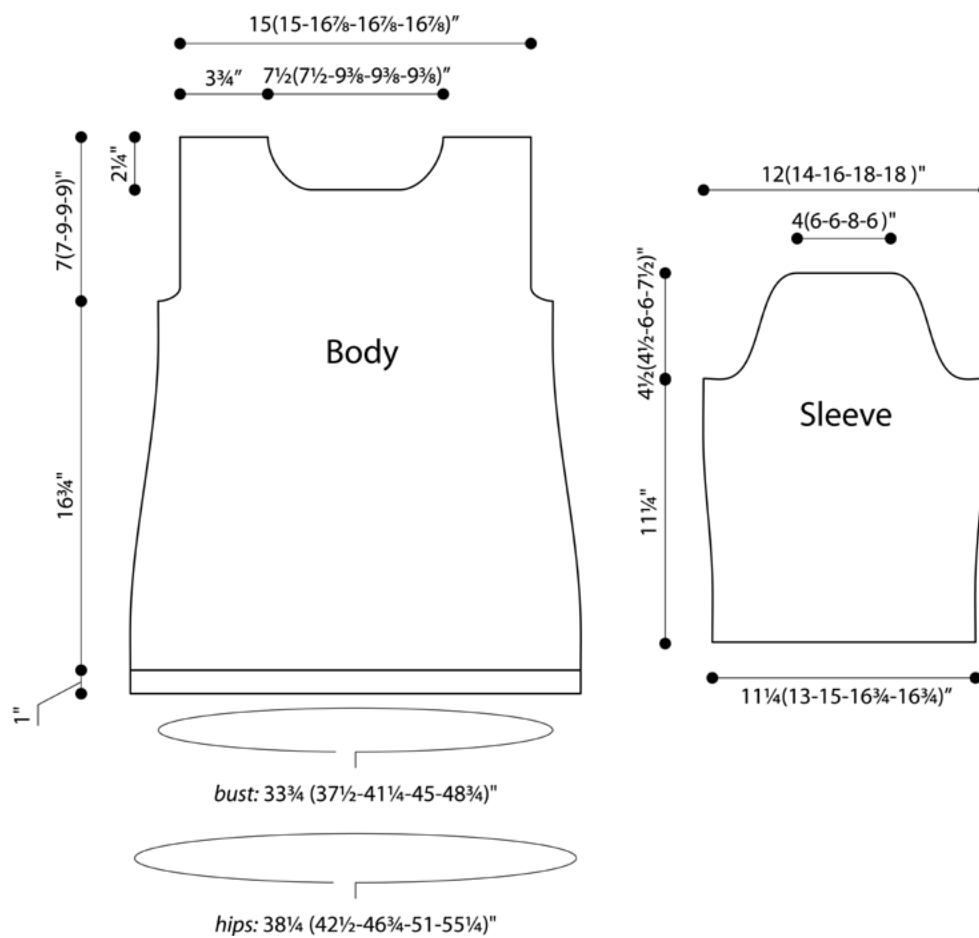
Rnd 2: Ch 1, sl st in ea sc around, fasten off.

BOTTOM EDGING

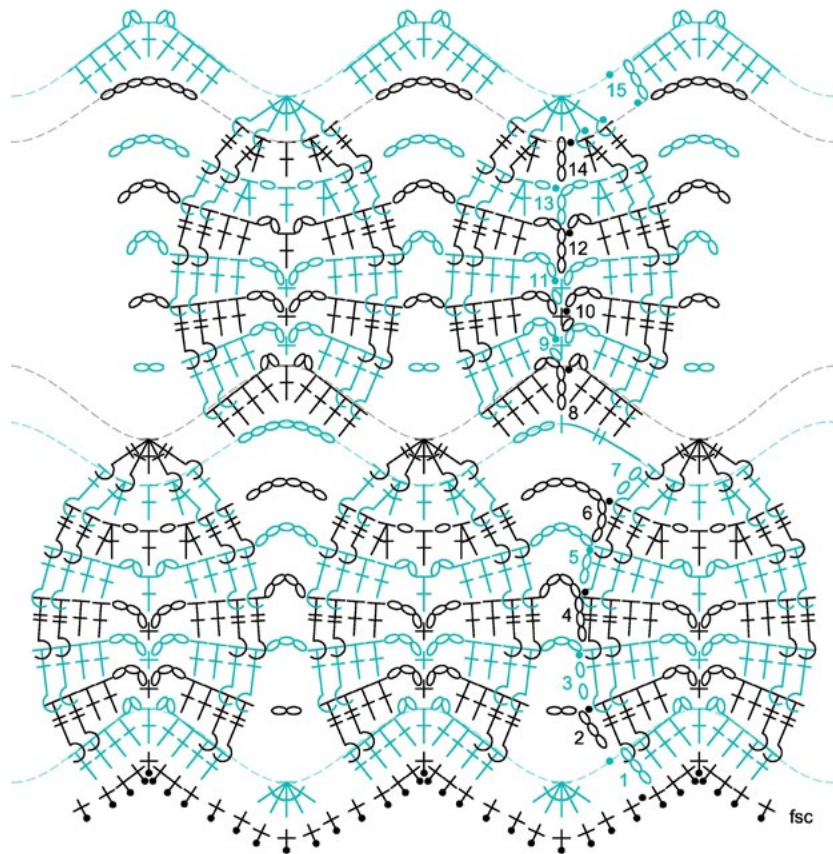
Join yarn to RS back edge with sl st at center ch of any dc5tog,

Rnd 1 (RS): Sc in same st, *sc in next ch, hdc in next ch, dc in next ch, tr in next ch, tr5tog over next 5 ch, tr in next ch, dc in next ch, hdc in next ch, sc in next 2 ch; rep from * around, sl st to first sc, do not turn.

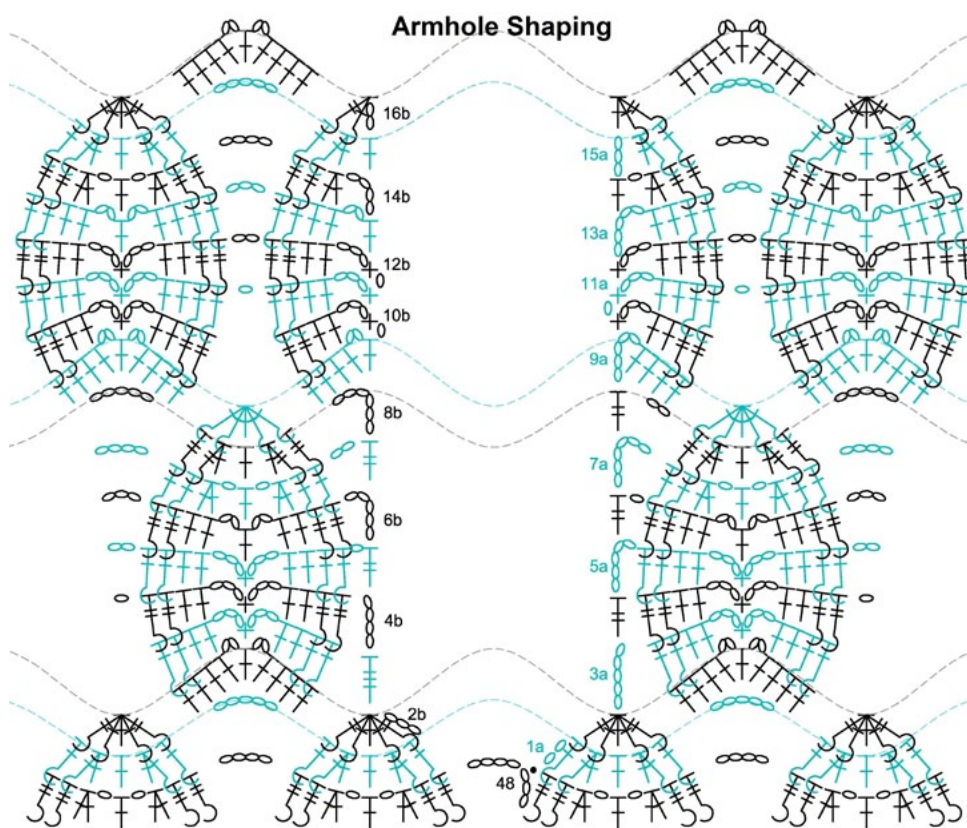
Rnd 2: Ch 2, hdc in ea sc around, sl st to top of tch, fasten off.

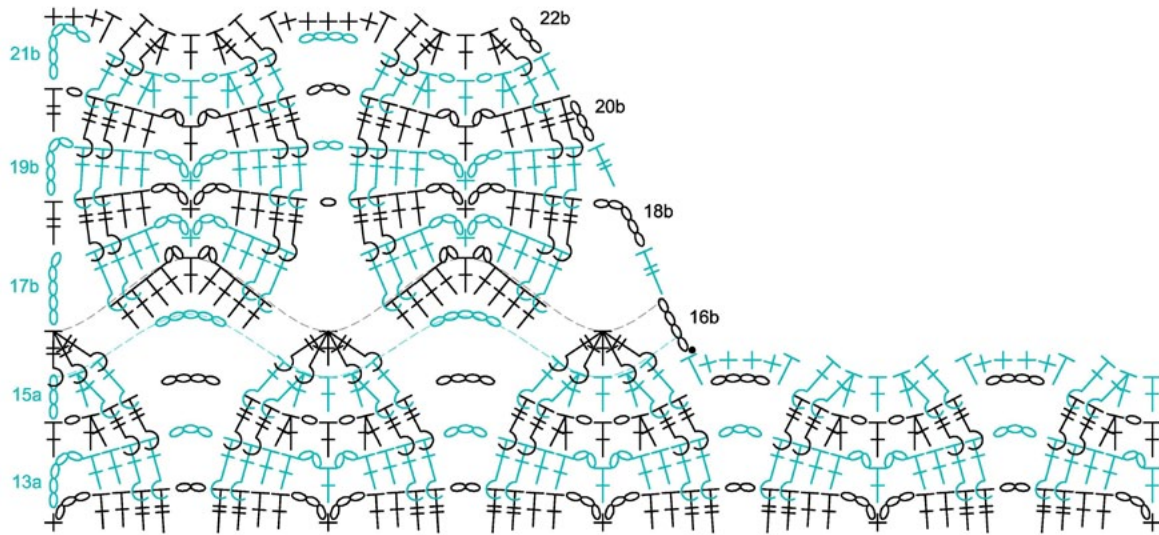


Arch Cables Stitch Pattern

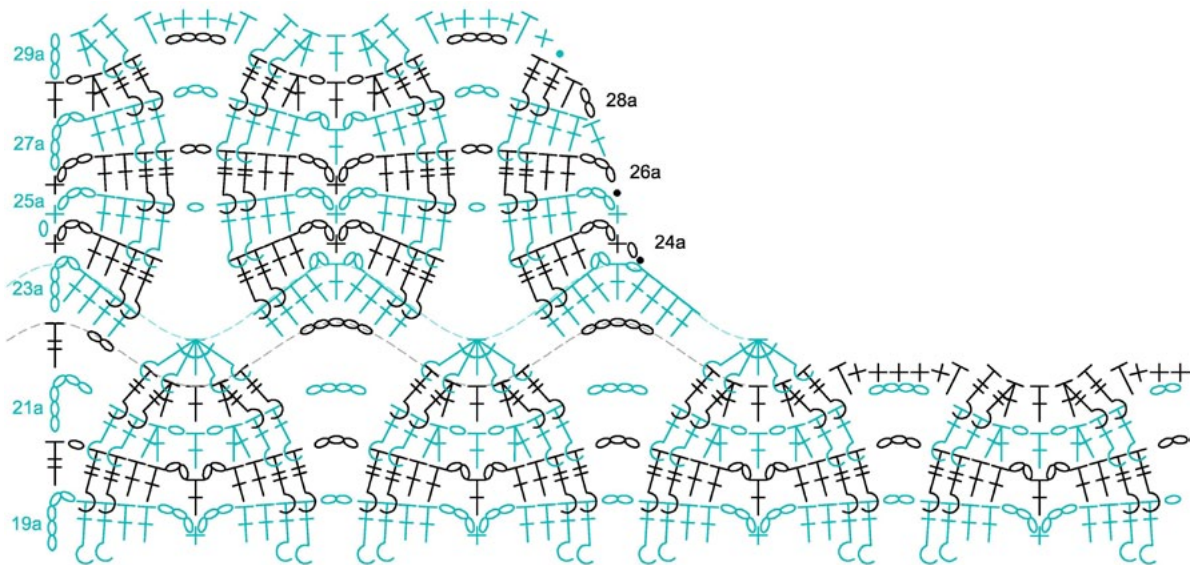


Body Stitch Diagram

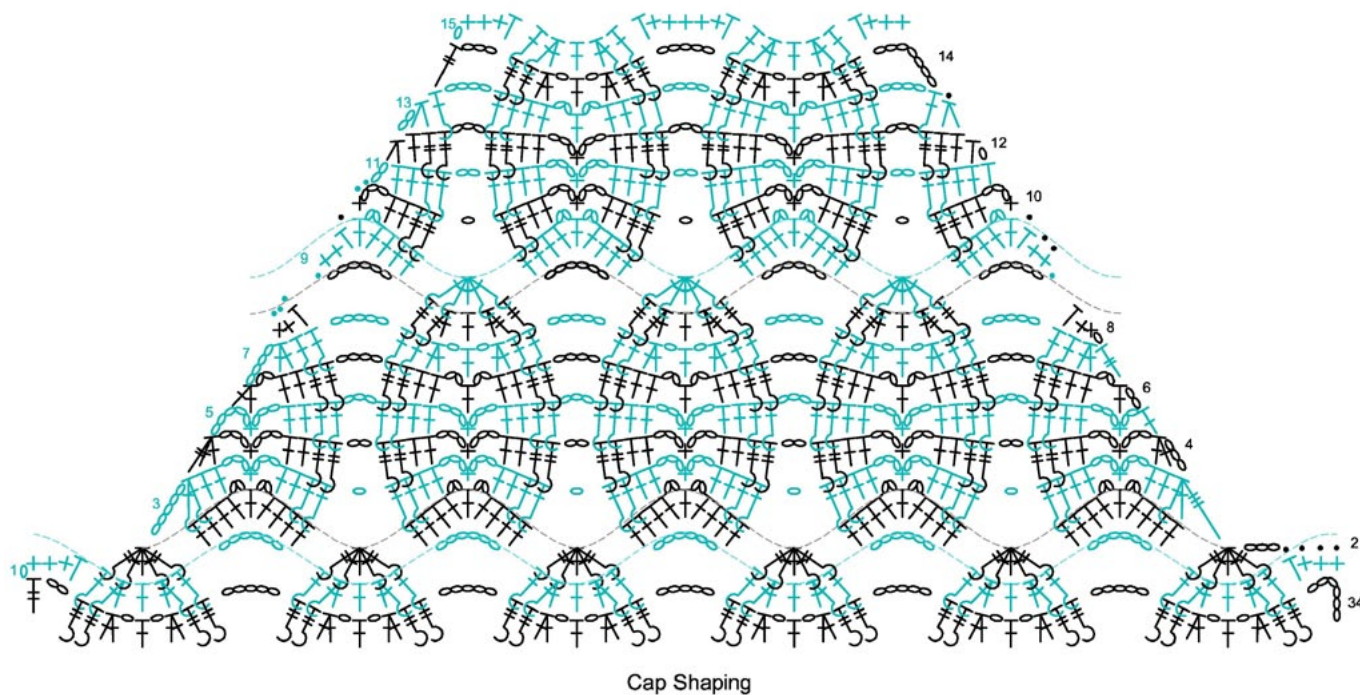




S/ M Collar Shaping



L/ XL/ 2X Collar Shaping



Crochet Stitches

○ ch	FPdc2tog
• sl st	BPdc2tog
+ sc	tr arch pt
⊥ fsc	dc arch pt
⊥ hdc	Lf tr dec
⊥ hdc2tog	Rt tr dec
⊥ dc	Lf dc dec
⊥ BPdc	Rt dc dec
⊥ dc2tog	Lf cap dec
⊥ tr	Rt cap dec
⊥ FPtr	
⊥ dtr	

ABBREVIATIONS & TERMS

Special Stitches/Abbreviations

SR: Stitch Repeat (Stitches to repeat for stitch pattern)

RR: Row Repeat (Number of rows to repeat for stitch pattern)

Prev: Previous

Dtr: Double Treble Crochet

Tr: Treble Crochet

Dc: Double Crochet

Hdc: Half Double Crochet

Sc: Single Crochet

Ch-sp: Chain Space

FPtr: Front Post Treble Crochet - Yarn over twice, insert hook from front to back to front around the post of the stitch indicated, yarn over and pull up a loop, [yarn over and pull through 2 loops on hook] three times

BPdc: Back Post Double Crochet - Yarn over, insert hook from back to front to back around the post of the stitch indicated, yarn over and pull up a loop, [yarn over and pull through 2 loops on hook] twice

Fsc: Foundation Single Crochet - Ch 2 (does not count as fsc), insert hook in 2nd ch from hook, yo and pull up lp, yo and draw through 1 lp (the "ch"), yo and draw through 2 lps (the "fsc"), * insert hook under 2 lps of the "ch" st of last fsc, yo and pull up lp, yo and draw through 1 lp, yo and draw through 2 lps, rep from * for length of foundation.

FP/ BP dc2tog: double crochet 2 together either with front post, back post, or regular stitches - *yo, insert the hook around the post of the next indicated stitch (for FP or BP) or into next st (for dc2tog), yo and draw up a loop, yo and draw through two loops on the hook, rep from * one more time, yo and draw through the remaining loops on the hook.

Dc arch point: decrease at top of arch motif in a dc row - *yo, insert the hook around the post of the next indicated stitch from back to front to back, yo and draw up a loop, yo and draw through two loops on the hook**, rep from * one more time, yo, insert hook into next st, yo and draw up a loop, yo and draw through 2 loops on the hook, rep from * twice more to **, yo and draw through the remaining loops on the hook.

Tr arch point: decrease at top of arch motif in a tr row - *Yo twice, insert the hook around the post of the next indicated stitch from front to back to front, yo and draw up a loop, [yo and draw through two loops on the hook] twice, * **yo, insert the hook around the post of the next indicated stitch from front to back to front, yo and draw

up a loop, yo and draw through two loops on the hook**, yo, insert hook into next st, yo and draw up a loop, yo and draw through 2 loops on the hook, rep from ** to **, rep from * to *, yo and draw through the remaining loops on the hook.

Lf tr dec: left slanting decrease in a tr row with one leg a front post - Yo, insert hook into next st, yo and draw up a loop, yo and draw through 2 loops on the hook, yo twice, insert the hook around the post of the next indicated stitch from front to back to front, yo and draw up a loop, [yo and draw through two loops on the hook] twice, yo and draw through the remaining loops on the hook.

Rt tr dec: right slanting decrease in a tr row with one leg a front post - Yo twice, insert the hook around the post of the next indicated stitch from front to back to front, yo and draw up a loop, [yo and draw through two loops on the hook] twice, yo, insert hook into next st, yo and draw up a loop, yo and draw through 2 loops on the hook, yo and draw through the remaining loops on the hook.

Lf dc dec: left slanting decrease in a dc row with one leg a back post - Yo, insert hook into next st, yo and draw up a loop, yo and draw through 2 loops on the hook, yo, insert the hook around the post of the next indicated stitch from front to back to front, yo and draw up a loop, yo and draw through two loops on the hook, yo and draw through the remaining loops on the hook.

Rt dc dec: right slanting decrease in a dc row with one leg a back post - Yo, insert the hook around the post of the next indicated stitch from front to back to front, yo and draw up a loop, yo and draw through two loops on the hook, yo, insert hook into next st, yo and draw up a loop, yo and draw through 2 loops on the hook, yo and draw through the remaining loops on the hook.

Rt cap dec: right slanting decrease in cap shaping - Yo twice, insert into next indicated stitch, yo and draw up a loop, [yo and draw through two loops on the hook] twice, *yo, insert hook into next st, yo and draw up a loop, yo and draw through 2 loops on the hook; rep from * once, yo and draw through the remaining loops on the hook.

Lf cap dec: left slanting decrease in cap shaping - *Yo, insert hook into next st, yo and draw up a loop, yo and draw through 2 loops on the hook; rep from * once, yo three times, insert into next indicated stitch, yo and draw up a loop, [yo and draw through two loops on the hook] 3 times, yo and draw through the remaining loops on the hook.

hdc2tog: half double crochet 2 together - *yo, insert the hook into next st, yo and draw up a loop, rep from * one more time, yo and draw through all loops on the hook.